

**INTELLIGENTER
OR MORE
INTELLIGENT –
A LESSON ON
COMPARISONS**

Sylwia Filipczuk

THE STRUCTURE OF THE PRESENTATION

1. Basic lesson data: time and students.
2. The plan of the lesson: types of exercises.
3. CONCLUSION.

2 A. THEORY

COMPARATIVE AND SUPERLATIVE FORM OF ADJECTIVES

1. To syllable adjectives add to form the comparative and to form the superlative.

Old	older	the oldest
Nice	nicer	the nicest
Cold	colder	the coldest

**** if a syllable adjective ends in a +, we double the consonant (spółgłoska)

Fat	fatter	the fattest
Slim	slimmer	the slimmest

2. To syllable and syllable adjectives add to form the comparative and to form the superlative.

Beautiful	more beautiful	the most beautiful
Intelligent	more intelligent	the most intelligent

**** if a two-syllable adjective ends in,, (+ change -y into) add to form the comparative and to form the superlative.

Narrow	narrower	the narrowest
Lucky	luckier	the luckiest
Lovely	lovelier	the loveliest

3. EXCEPTIONS

Good
Bad
Little
***Far

2 B. SPEAKING

- ◉ FIND SOMEONE WHO - A GAME
- ◉ has the fastest car in the hood;
- ◉ is the biggest winner in sports;
- ◉ listens to the loudest music;
- ◉ sleeps the longest in the dorm;
- ◉ has the most modern mobile;
- ◉ has the biggest flat screen TV;
- ◉ loves the scariest movies;
- ◉ spends the most money;
- ◉ is the laziest student.

2C. TEXT EXERCISE 1

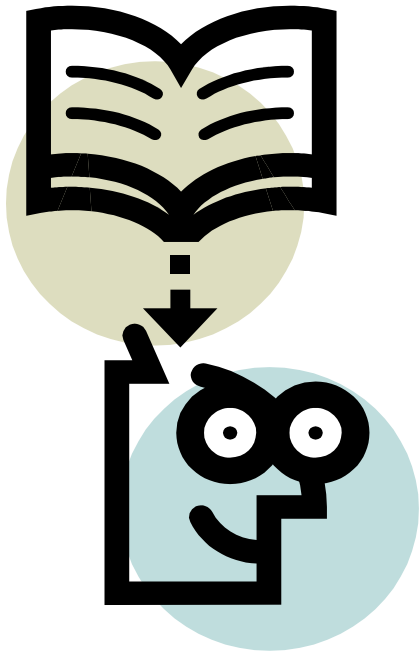


Complete the following text with comparatives or superlatives.

Florida's Disneyland is one of 1.....
(popular) tourist destinations. It contains the
2..... (big) number of the 3.....
(magical) creatures in the whole world. It is
4.....(colourful) than any theme park in
the USA. Some say that it is 5..... (good)
than Legoland. For Europeans, it may be located
6..... (far) than the one in France yet they
are prepared to buy 7..... (expensive)
ticket only to see their 9..... (favourite)
characters. Don't waste time – go and spend
10.....(lovely) moments in your life.

2D. DESCRIPTION OF A CITY

- GAME



- ◉ Time limit: 8 min.
- ◉ Students: individual work.
- ◉ IDEA: Each student had to prepare a description of a city (min. 4 sentences) using comparative and superlative forms of adjectives. Then say it aloud. The others had to guess the name of the city.

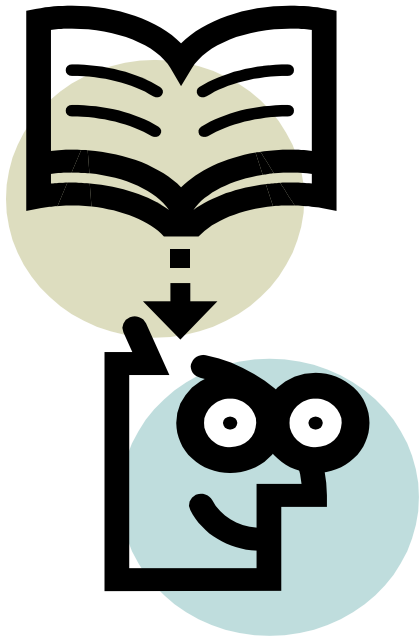
2E. TEXT EXERCISE 2



Complete the text with comparatives and superlatives of adjectives.

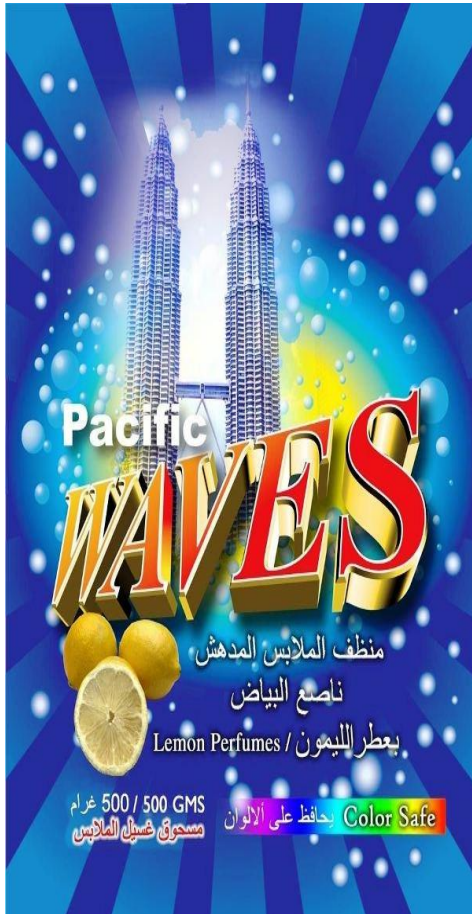
Sigourney Weaver is one of **1**.....(**tall**) and **2**..... (**recognizable**) American actresses. She is also one of **3**..... (**attractive**) ones. Her fine features are considered to be as **4**..... (striking) as those of Audrey Hepburn. Some even say that she is **5**..... (**talented**) has gone **6**..... (**far**) than Hepburn. Her **7**..... (**memorable**) performance is the one in Alien and all its parts. The film is one of the **8**..... (**big**) box office hits in history. Some feminists consider it one of **9**..... (**ground-breaking**) roles in women history as it presents a (**powerful**) and **10**..... (**self-reliant**) woman than all other movies. This is a woman who is not afraid of **11**..... (**dangerous**) and **12**..... (**ugly**) creatures in cinema history which nobody can fight as **13**..... (**successfully**) as she can. However, some people think that the last part with Winona Ryder was **14**..... (**bad**) and **15**..... (**little**) interesting than the other ones. On the other hand, it had **16**..... (**good**) special effects and was made by means of **17**..... (**advanced**) technology. Thanks to it, Weaver has become one of the **18**..... (**rich**) actresses in Hollywood. Although she is **19**..... (**old**) and **20**..... (**experienced**) now than when she played Ellen Ripley she is still not afraid of challenges.

2F. DESCRIPTION OF A CELEBRITY - GAME



- ◉ Time limit: 8 min.
- ◉ Students: individual work.
- ◉ IDEA: Each student had to prepare a description of a celebrity (min. 4 sentences) using comparative and superlative forms of adjectives. Then say it aloud. The others had to guess the name of the celebrity.

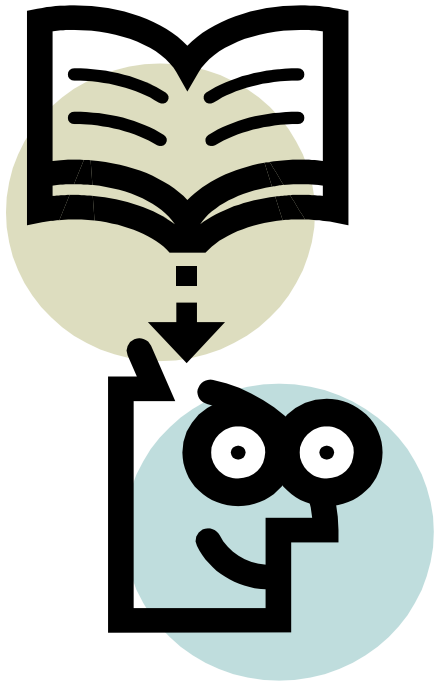
2G. TEXT EXERCISE 3



Complete the text with comparatives and superlatives of adjectives.

Pacific Waves is 1.....(innovative) product on the market. It has been researched 2.....(long) than any other washing powder. It has 3.....(fresh) scent reminiscent of 4.....(ripe) lemons. Its formula is 5.....(good) than any known ones. It removes even 6.....(hard) stains 7.....(fast) than all similar products. It will leave you clothes 8.....(clean) and 9.....(smooth) than traditional washing powders. And guess what – it is 10.....(cheap) than you would expect!!!!

2H. ADVERTISEMENT - A GAME



- ◉ Time limit: 10 min.
- ◉ Students: group work
- ◉ Idea: Students choose a product from teacher's bag. They cannot show it to the class. They prepare an advertisement focusing on the object's: shape, size, taste, smell, package, colour, use.

CONCLUSION

**THANK YOU FOR YOUR
ATTENTION**